



## "Cheung Hing" Ductile Iron (Equilibrium Type) Ball Float Valve With Flange Ends

### APPLICATION

Float valve is used inside a water tank and provided reliable water supply.

The long lever provides a long float travel for full valve travel, securing a slow rate of valve closure.

These float valves are suitable for fresh water (Type A) and flush water (Type B).

### OPERATION CONDITIONS

Working Pressure:	14 bar
Body Test Pressure:	25 bar
Working Temperature:	0 to 60°C
Usable Fluid:	Fresh Water Flush Water

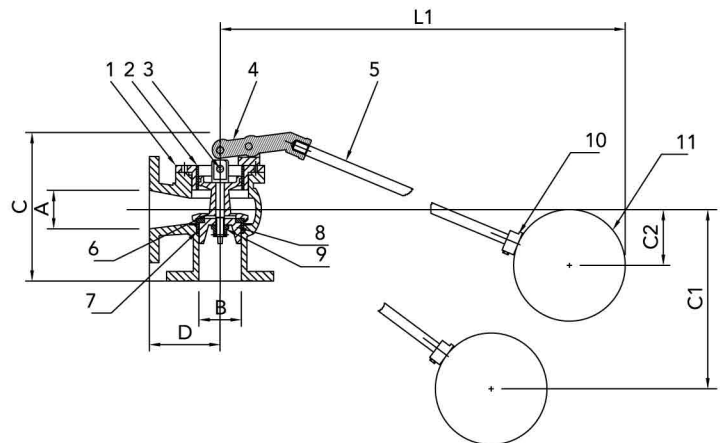
### CONSTRUCTION

Part No.	Description	Materials
1	Body	Ductile Iron
2	Piston Cylinder	Stainless Steel
3	Liner	Gunmetal
4	Holder	Gunmetal
5	Lever	Stainless Steel
6	Piston	Gunmetal
7	Seat Ring	Stainless Steel
8	Seat	Gunmetal
9	Nut	Gunmetal
10	Fitting	Stainless Steel
11	Float Ball	S.S. for Fresh Water Poly-foam for Flush Water

### FEATURES

- Shaped body to give good flow pattern.
- Flanged end outlet.
- All parts easily removable for maintenance.
- The water level can be adjusted as required.
- The pressure balanced mechanism minimize the noise of vibration.

### SECTIONAL DRAWING



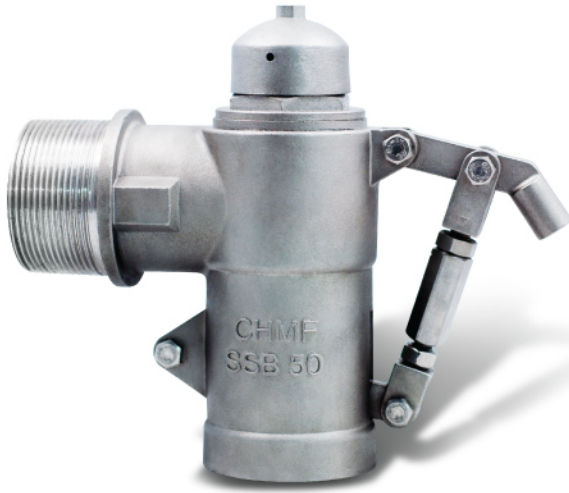
### DIMENSIONS (IN MM)

#### For Fresh Water (Type A)

Model	A	B	C	D	C1	C2	L1	Lever	S.S. Float
VH080A	80	80	277	135	800	260	1420	20 x 1212	360
VH100A	100	100	303	134	990	255	1770	22 x 1515	410
VH150A	150	150	415	182	1105	340	1820	32 x 1515	480

#### For Flush Water (Type B)

Model	A	B	C	D	C1	C2	L1	Lever	Poly-foam Float
VH080B	80	80	277	135	800	260	1420	20 x 1212	360
VH100B	100	100	303	134	990	255	1770	22 x 1515	410
VH150B	150	150	415	182	1105	340	1820	32 x 1515	460



## “Cheung Hing” Stainless Steel 316 (Lever Type) Ball Float Valve With Screw Ends

### Working Pressure

- Hydraulic test to BS 1212 part 1 C1.24.1 : 20 bar
- Shut-off test to BS 1212 part 1 C1.24.2 : 14 bar

### Test methods

- BS 1212: Part 1: 1990; BS EN 1092-2: 2003; BS EN 10088-3: 2014 & BS EN 10088-1: 2014

### Materials

Component	Designation
1. Body	BS EN 10088-1:2014, 1.4401
2. Lever	BS EN 10088-1:2014, 1.4401
3. Stem	BS EN 10088-1:2014, 1.4401
4. Bonnet	BS EN 10088-1:2014, 1.4310
5. Float	BS EN 10088-3:2014, 1.4301

### Dimensions (in mm)

#### For Fresh Water (Type A)

Model	A	B	C1	C2	L1	Lever	S.S. Float Ball
SSB050A	50	50	435	280	630	10 x 585	255
SSB080A	80	80	860	590	1070	13 x 991	305
SSB100A	100	100	970	460	1370	16 x 1220	356

Remarks : Water Supplies Department Acceptance Reference No. : C20160924

#### For Flush Water (Type B)

Model	A	B	C1	C2	L1	Lever	Poly-foam Float Ball
SSB050B	50	50	435	280	630	10 x 585	255
SSB080B	80	80	860	590	1070	13 x 991	305
SSB100B	100	100	970	460	1370	16 x 1220	356

### Applications

Float valve is used inside a water tank and provided reliable water supply. The long water provides a long float travel for full valve travel, securing a slow rate of valve closure. These float valves are suitable for fresh water (Type A) and flush water (Type B).

### Features

- Shaped body to give good flow pattern.
- Screwed end outlet.
- All parts easily removable for maintenance.

### Sectional Drawing

