

D E **F I N E N E O** S P A C E
F I N E O L U X U R Y V I N Y L T I L E

We are an eco-friendly flooring company who produces healthy and safe luxury vinyl tile.

FINEO LVT is made of 100% pure virgin compound.

FI.NEO LVT

MODERN | 피네오LVT 모던 시리즈

DESIGN INDEX

Slate Stone / Mosaic Carpet

600mm X 600mm X 3,0(T)



Slate Stone **FSM 6001**



Slate Stone **FSM 6002**



Slate Stone **FSM 6003**



Slate Stone **FSM 6004**



Mosaic Carpet **FSM 6201**



Mosaic Carpet **FSM 6202**



Mosaic Carpet **FSM 6203**



Mosaic Carpet **FSM 6204**

Stone / Concrete / Ceramic

450mm X 450mm X 3,0(T)



Sand Stone **FSM 4001**



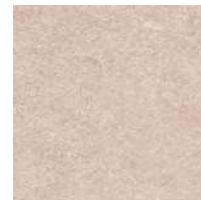
Sand Stone **FSM 4002**



Sand Stone **FSM 4003**



Sand Stone **FSM 4004**



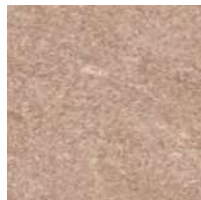
River Stone **FSM 4011**



River Stone **FSM 4012**



River Stone **FSM 4013**



River Stone **FSM 4014**



Basic Carpet **FSM 4201**



Basic Carpet **FSM 4202**



Basic Carpet **FSM 4203**



Basic Carpet **FSM 4204**



Tweed Carpet **FSM 4211**



Tweed Carpet **FSM 4212**



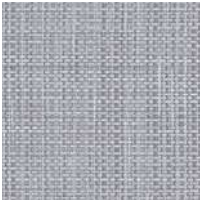
Tweed Carpet **FSM 4213**



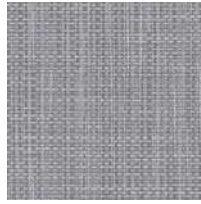
Tweed Carpet **FSM 4214**

Woven / Concrete / Ceramic

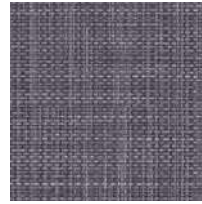
450mm X 450mm X 3.0(T)



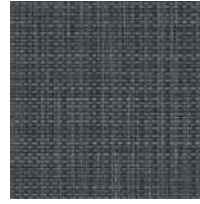
Fettuccine Woven **FSM 4301**



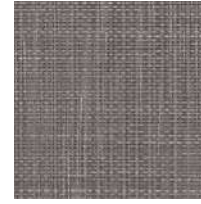
Fettuccine Woven **FSM 4302**



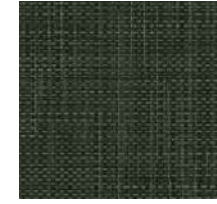
Fettuccine Woven **FSM 4303**



Fettuccine Woven **FSM 4304**



Fettuccine Woven **FSM 4305**



Fettuccine Woven **FSM 4306**



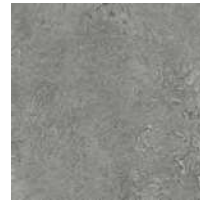
Crema Concrete **FSM 4401**



Crema Concrete **FSM 4402**



Crema Concrete **FSM 4403**



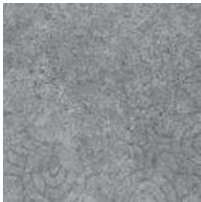
Crema Concrete **FSM 4404**



Patch Ceramic **FSM 4501**



Patch Ceramic **FSM 4502**



Patch Ceramic **FSM 4503**



Patch Ceramic **FSM 4504**

Terazzo / Marble / Abstract / Metal

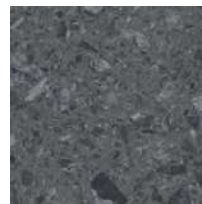
450mm X 450mm X 3.0(T)



Moral Terazzo **FSM 4601**



Moral Terazzo **FSM 4602**



Moral Terazzo **FSM 4603**



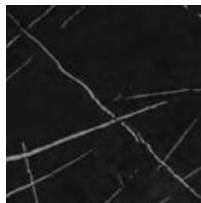
Moral Terazzo **FSM 4604**



Bianco Silver **FSM 4701**



Gray Marquina **FSM 4702**



Nero Marquina **FSM 4703**



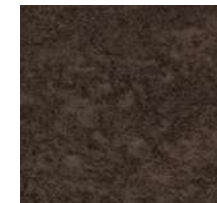
Abstract Pearl **FSM 4801**



Abstract Pearl **FSM 4802**



Abstract Pearl **FSM 4803**



Abstract Pearl **FSM 4804**



Bumpy Metal **FSM 4811**



Bumpy Metal **FSM 4812**



Bumpy Metal **FSM 4813**

LIGHT WOOD

180mm X 920mm X 3.0(T)



Calm Oak

FWM 8001



Calm Oak

FWM 8002



Calm Oak

FWM 8003



Yadrana Ash

FWM 8011



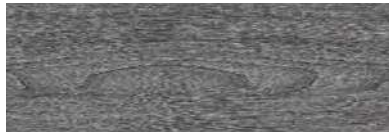
Yadrana Ash

FWM 8012



Yadrana Ash

FWM 8013



Yadrana Ash

FWM 8014

NATURAL WOOD

180mm X 920mm X 3.0(T)



Mystic Oak

FWM 8301



Mystic Oak

FWM 8302



Mystic Oak

FWM 8303



Mystic Oak

FWM 8304



Timor Oak

FWM 8311



Timor Oak

FWM 8312



Timor Oak

FWM 8313



Timor Oak

FWM 8314

WILD & RUSTIC WOOD

180mm X 920mm X 3.0(T)



Sandwick Oak

FWM 8501



Sandwick Oak

FWM 8502



Sandwick Oak

FWM 8503



Modica Oak

FWM 8511



Modica Oak

FWM 8512



Modica Oak

FWM 8513



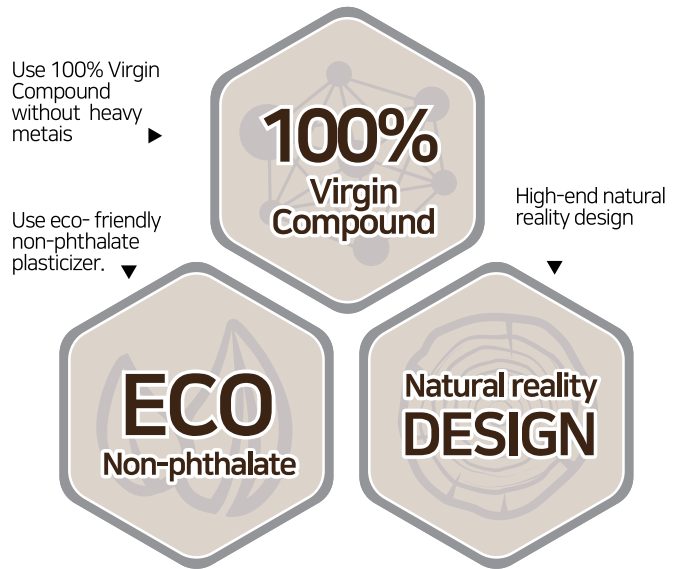
Rainer Oak

FWM 8701



Rainer Oak


FWM 8702





FINEO LVT

Merits of Fineo LVT Tiles

Use 100% Virgin Compound without heavy metals and eco-friendly non-phthalate plasticizer.

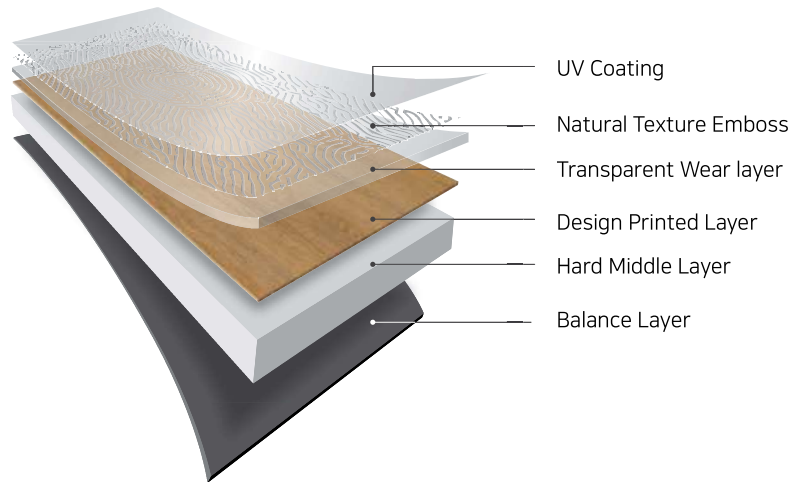
- 

The core layer of FINEO LVT uses 100% Virgin compound without heavy metals. It maintains the uniformity of quality in the latest fully automated in-line production system and manages much higher quality products.
- 

FINEO LVT is an eco-friendly product made from green plasticizer harmless to the human. It is resistant to pet scratches and pollution caused by excrement. It can be easily removed by water cleaning.
- 

FINEO LVT has an excellent design reality. It's surface emboss satisfies both design and function with realistic 3D effect and non-slip safety.

FINEO LVT Structure



FINEO LVT Features

FINEO LVT box packaging System with design control minimizes pattern repetition. This box packaging method provides more realistic floor designs with reasonable cost.

Type	Thickness(mm)	Size(mm)	pcs / box	m ² / box
Square 4	3.0	450X450	16pcs	3.24m ²
Square 6	3.0	600X600	9pcs	3.24m ²
Wood 8	3.0	180X920	20pcs	3.24m ²



Education



Restaurant



Office



Commercial



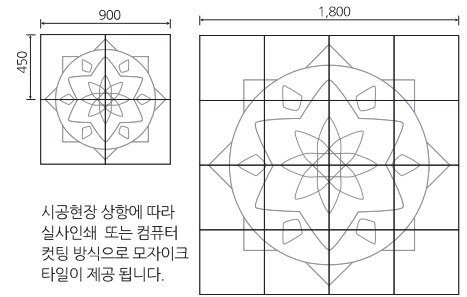
Residential

FINEO MOSIC TILE 피네오 모자이크 타일

4 pcs Design Size : 900mm(W) X 900mm(L) X 3.0(T)
 16 pcs Design Size : 1,800mm(W) X 1,800mm(L) X 3.0(T)



기업 로고형 모자이크 타일은 별도 주문의뢰 가능 합니다.



시공현장 상황에 따라
 실사인쇄 또는 컴퓨터
 컷팅 방식으로 모자이크
 타일이 제공 됩니다.



FMM 201



FMM 202



FMM 203

상기 이미지 컷은 실제 제품과 색상 및 무늬가 차이가 날 수 있습니다, 특히 조명 및 빛의 각도에 따라 색상이 다르게 보일 수 있으므로 소비자에게 반듯이 공지 하셔야 합니다.

FINEO LVT Guide 피네오 LVT타일 주의사항

시공시 유의사항

- * 시공 바닥면은 충분한 강도와 평탄도를 유지하여 주십시오.
- * 시공 바닥면의 오염물질은 제거하여 주시고 바닥습도를 4.5% 이하로 유지 하여 주십시오.
- * 시공전 로트번호 확인 후 반드시 동일로트 제품으로 시공하여 주십시오.
- * 시공시 온도는 18℃ 이상의 상온을 유지하여 주시고 타일과 접착제는 시공장소 에서 24시간 이상 보관 후 사용하여야 합니다.
- * 기존 바닥재 및 합판 등에 중첩시공을 하지 마십시오.
- * 시공시 안전장비를 착용하여 주시고 접착제 또는 제품 특유의 냄새가 날 수 있으니 충분히 환기를 시켜주십시오.
- * 접착제 도포시 경량을 도포하고, 제품의 완전한 안착을 위해 시공 후 50kg 이상의 롤러로 충분히 압착하여 주십시오.
- * 온도 및 습도 변화가 심한장소 또는 물청소가 빈번하게 이루어지는 곳은 유성 접착제를 사용하여 주십시오.

보관시 유의사항

- * 중량물이므로 적재 및 운반에 주의해 주시고 너무 높은 적재나 난폭한 취급은 제품의 손상 및 사용자의 안전을 위협할 수 있습니다.
- * 장시간 다단적재나 세워져 보관할 경우 제품의 변형 손상이 일어날 수 있습니다.
- * 직사광선 및 수분을 피해 평탄하고 건조한 상온의 장소에 보관하여야 합니다.

사용상 유의사항

- * 수분, 기름, 모래 등의 이물질은 제품의 변형이나 미끄러짐을 유발할 수 있으니 즉시 제거하여 주십시오.
- * 직사광선에 장시간 노출은 제품의 변형을 일으킬 수 있으니 주의하여 주십시오.
- * 화학약품, 수분 등에 노출은 제품의 변형을 일으킬 수 있으므로 오염 즉시 제거 하여 주십시오.
- * 날카로운 물체나 무거운 물체는 찍힘이나 파손을 일으킬 수 있으므로 주의하여야 합니다.
- * 제품을 태우면 유독가스가 발생할 수 있으므로 반드시 허가받은 지정 산업폐기물 업자에게 위탁 처리하여야 합니다.
- * 바닥의 오염제거, 청소시 중성세제를 사용해 주시고 필요시 약한 알콜용제를 사용하여 오염을 제거할 수 있습니다.

Installation Guide

- * Subfloor must be flat and hard. Dust, dirt and moisture must be removed.
- * Same batch product should be installed.
- * Subfloor temperature should be maintained at 18°C or above. Tile and adhesive should be kept in the location for 24 hours before installation.
- * Do not install FINEO LVT over loose subfloor like old VCT, LVT or plywood board.
- * Wear proper safety gears during installation and ventilate properly.
- * Subfloor must meet the condition of Dryness. Moisture level of subfloor must not exceed 4.5%.
- * Apply 50kg (or more) floor roller to press the tile enough after installation.
- * Proper adhesives and secure adhesion methods must be applied according to subfloor, temperature and traffic condition. Traditional acryl, rubber, epoxy and urethane adhesive can be considered or double-side adhesion tape and spray adhesive also can be applied for FINEO LVT installation.

Storage Guide

- * FINEO LVT is heavy item. Be cautious on storage, handling and carrying. Throwing, high storage or double decking may cause product damage or human injury.
- * Keep the FINEO tile on the dry flat surface. Do not store it vertically.
- * Avoid direct sunlight, moisture and keep it normal temperature.

Maintenance Guide

- * Moisture, oil and sand cause slippery accident. It must be removed immediately.
- * Direct sunlight, strong chemical liquid and moisture may cause product damage or discoloration. Remove any contamination immediately.
- * Be careful with sharp or heavy objects as they can cause scratches or damage.
- * Toxic gas may be generated when the product is burned, so it must be entrusted to an authorized industrial waste contractor.
- * Use a neutral detergent to decontaminate and clean the floor, and if necessary, use a mild alcohol to remove the dirt.